

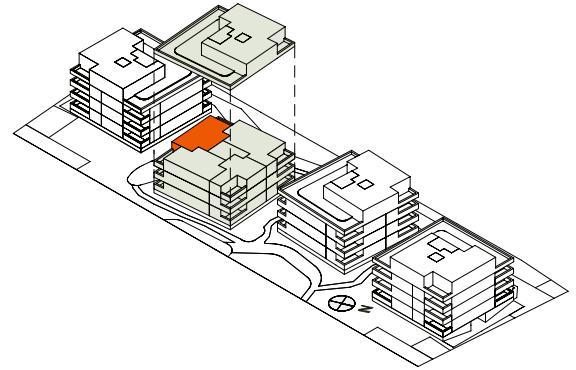
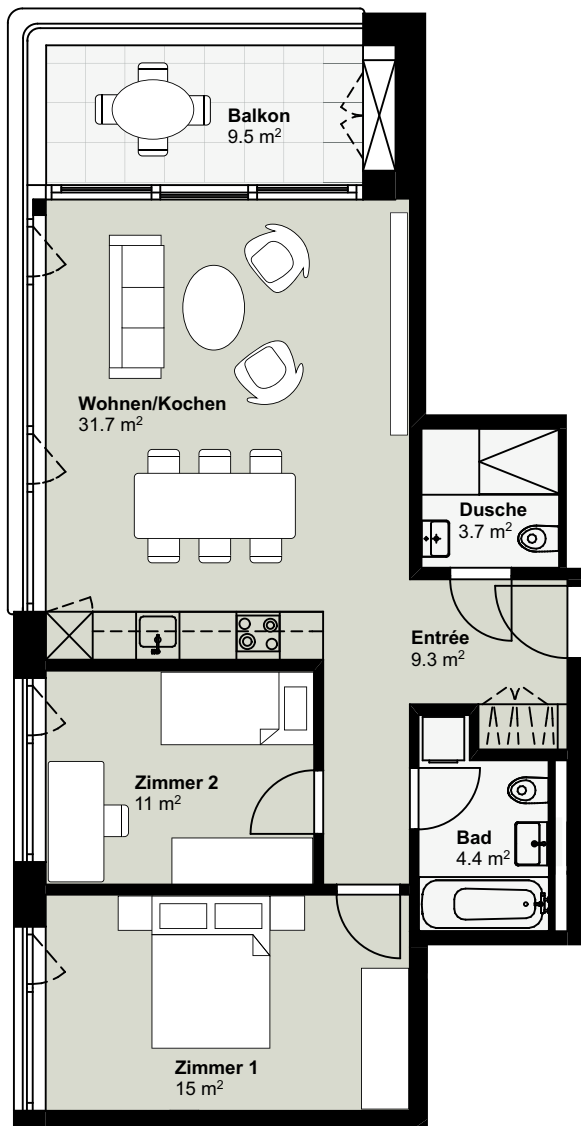
# QUBE<sup>4</sup>

## 3.5-Zi-Wohnung

2. OG, Langenhagweg 9

MODERNES  
WOHNEN  
ALLSCHWIL

<b>Wohnfläche:</b>	75.1m <sup>2</sup>
<b>Balkon:</b>	9.5m <sup>2</sup>
<b>Wohnungs-Nr.</b>	02.0203



0 1 2 3 4 5 Meter

Masstab 1:100

