

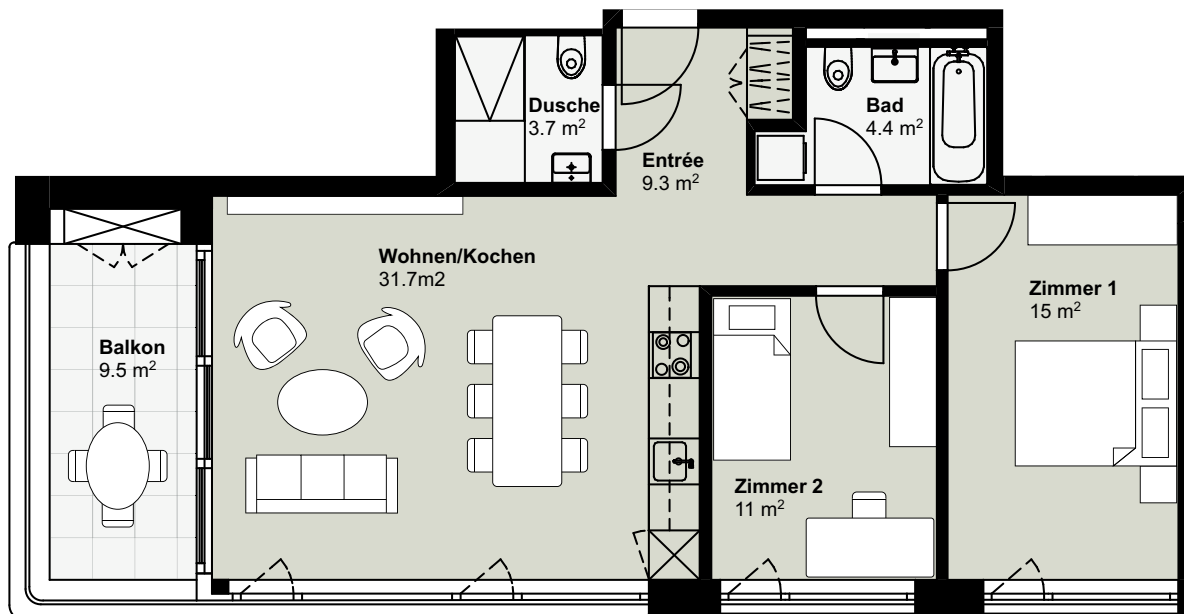
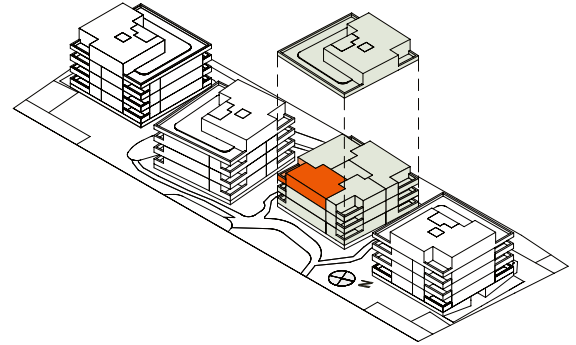
QUBE⁴

3.5-Zi-Wohnung

2. OG, Steinbühlweg 70

MODERNES
WOHNEN
ALLSCHWIL

Wohnfläche: 75.1m²
Balkon: 9.5m²
Wohnungs-Nr. 03.0202



0 1 2 3 4 5 Meter

Masstab 1:100

